

CASE STUDY: TURNKEY PACKAGING LINE AUTOMATION



CXV Global transforms patient lives by introducing pack line management software platform to one of the worlds highest-selling biometric monitoring device manufacturer



Client: Confidential



Industry: Medical Device



Location: Europe & US



24/7 Reassurance of on-site remote engineering support and expertise



Monitoring device now transforming the lives of over 1.5 million patients daily



8+ Year multi-site, multi-year, multi national Programme Partnership



On schedule roll-out to multiple assembly lines in manufacturing sites in Europe & US



Full traceability of: components during assembly; completed products through the supply chain and into the marketplace



CXV Global continuously innovated and improved the software platform and delivery model to meet the client's global market demand for the device



Annual market demand for the product increased from 3 million units at launch to over 50 million units currently



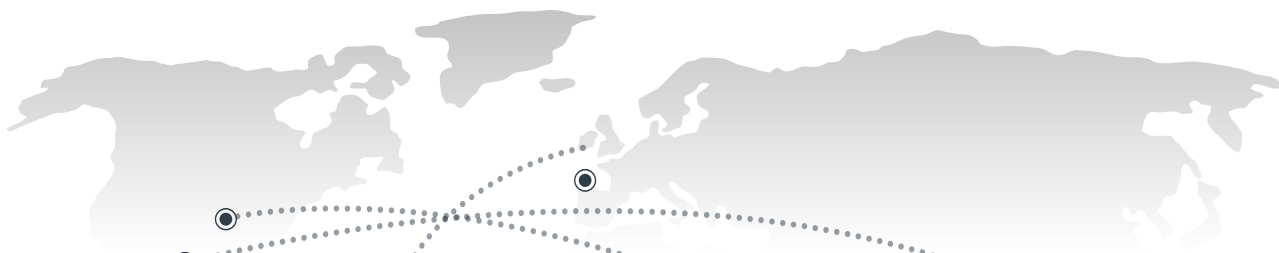
Recall-free production of millions of units of serialised product since market launch



Regulatory approval for sale on the US market led to lines being installed in the US and massive volume increases



Acknowledged as being among the most successful product launches in the history of medical device manufacturing



2012

Initial enquiry from client and assembly line OEM on new product introduction

2013

First traceability solution to assembly & packaging line in European manufacturing site

2015

Second line at another European manufacturing site to meet European demand

2018

FDA regulatory approval leads to assembly taking place there. Full traceability solution is deployed to new lines in the US

2019

CXV Global deploys solutions to more lines in the US to meet unprecedented market demand for the life-changing device

Overview

Our client, a biometric monitoring device manufacturer, and their assembly / packaging line OEM tasked CXV Global with management of component sub-assembly pairing and serialised identification of finished product on a number of high-speed lines in Europe and the US.

The client and OEM identified the part pairing, reconciliation, serialisation and edge device management as a critical element of the automation design in order to launch the product to market.

They selected CXV Global on the basis of over 30 years of experience with all major US and European OEMs as a trusted partner to provide this mission-critical solution.

The Client Solution

Leveraging existing IP and domain expertise, CXV Global rose to the complex challenge from concept through design, build, test, commissioning & qualification of fully automated lines on schedule that are supported 24/7 across Europe & the US.

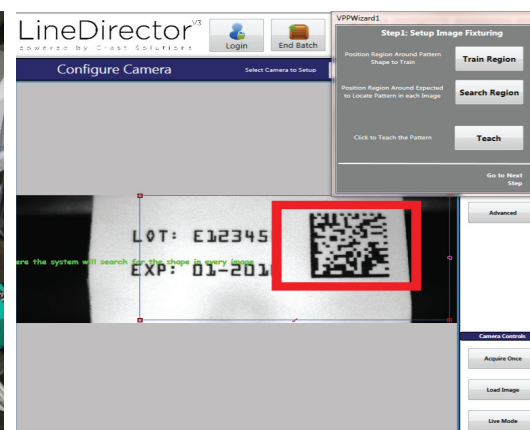
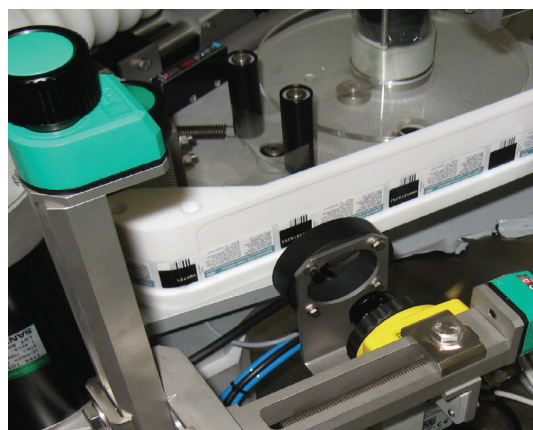
The software platform manages all data management and peripheral devices on a complex multi-part assembly and packaging process.

Commercially it is an unprecedented success for the client and has resulted in outstanding global sales performance.

We are proud to be an important partner to a medical device innovation that transforms the lives of over 1.5 million patients daily.

Technical Inputs

- Item identification pre-pairing
- Pack confirmation/product mix avoidance via 1D & 2D reading
- Checkweigher integration for batch verification
- Carton laser printing & carton labelling
- Aggregation of serialised units to case
- Pairing of applicator & sensor parts into single component identifier
- Unit-level serialised data management
- Label printing & verification
- Final software programming of chip & test of product
- Batch-level verification of carton artwork & IFU



For further information please visit www.cxvglobal.com

